

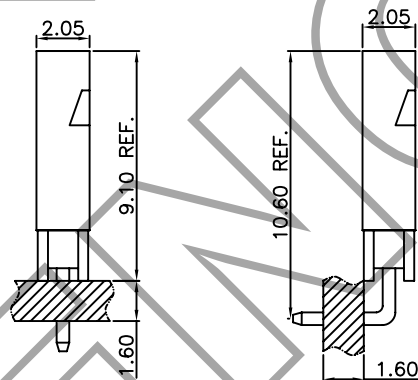
## Specifications

Current rating: 3A AC,DC  
 Voltage rating: 250V AC,DC  
 Temperature range: -40°C ~ +105°C  
 Contact resistance: 30mΩ Max.  
 Insulation resistance: 1000MΩ Min.  
 Withstanding voltage: 800V AC/minute  
 \*Contact E.N for details\*

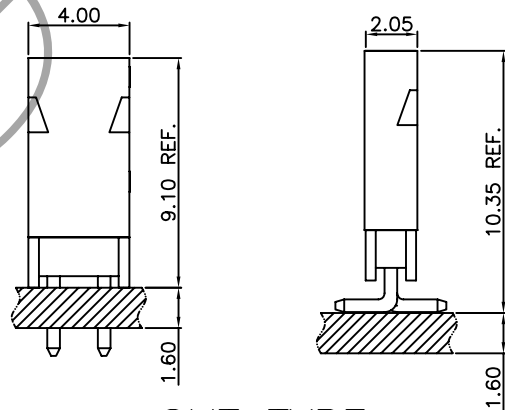
## Standards



## Assembly layout



DIP TYPE



SMT TYPE

## Ordering code

A2005 - T P  
 ① ② ③

- ① Series No.
- ② Plating code: T=Tin-plated, G=Gold-flash
- ③ Material: P=Phosphor bronze

A2005 H X - 2XNP  
 ① ② ③ ④ ⑤

- ① Series No.
- ② H=Housing
- ③ X=Type A=A teyp B=B type
- ④ Blank=Single row, 2X=Dual row
- ⑤ No. of circuits

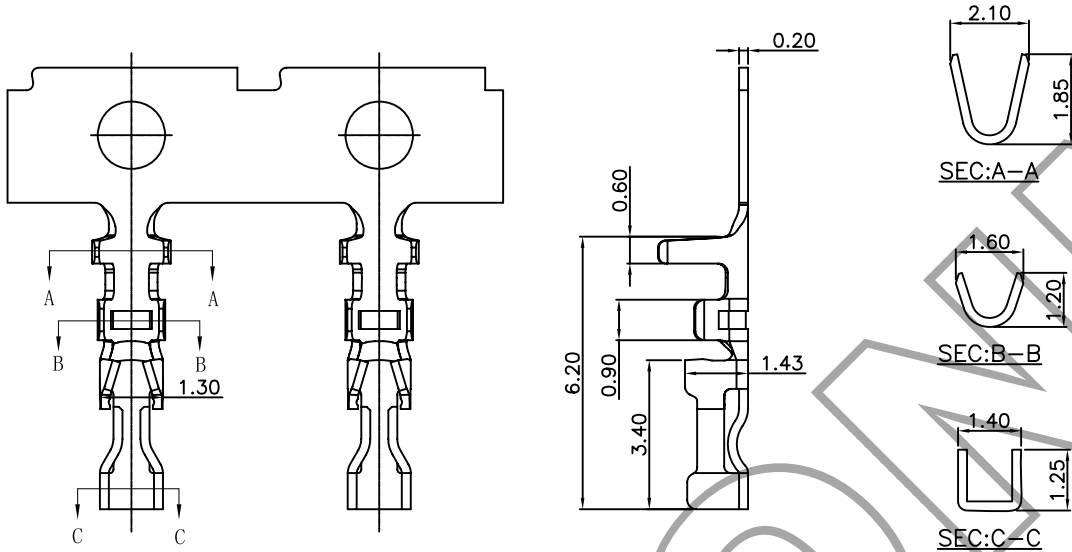
A2005 WR A -S - 2XNP  
 ① ② ③ ④ ⑤ ⑥

- ① Series No.
- ② Connector type: WV=Vertical, WR=Right angle  
 HV=Vertical Female Header  
 HR=Right angle Female Header
- ③ Blank=Normal type, A=Shell type
- ④ Mounting type: SF=SMT with boss  
 S=SMT without boss
- ⑤ Blank=Single row, 2X=Dual row
- ⑥ No. of circuits

## A2005-T 2.00mm pitch Crimp Terminal

### Reference Informations:

\*Mates with E.N A2005 series Housing



### Ordering Information & Specifications

Unit: mm

Part No	Wire Range	Insulation O.D.	Material	Finish	Qty/reel
A2005-TP	AWG#24-#30	1.40mm(max)	Phosphor Bronze	Tin-plated	10,000pcs
A2005-GT	AWG#24-#30	1.40mm(max)	Phosphor Bronze	Gold-plated	10,000pcs

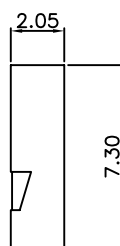
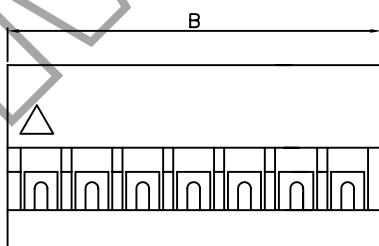
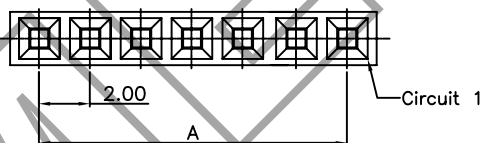
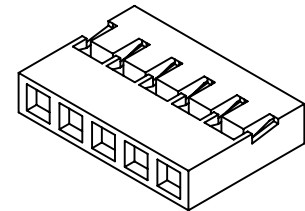
## A2005-H 2.00mm pitch Housing

### Reference Informations:

\*Material: PA66,UL94V-2

\*Suitable E.N A2005 series Terminal

\*Mates with E.N A2005 series Wafer



### Ordering Information & Dimensions

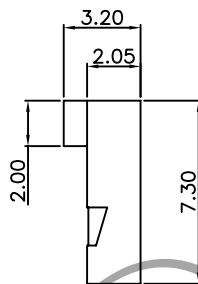
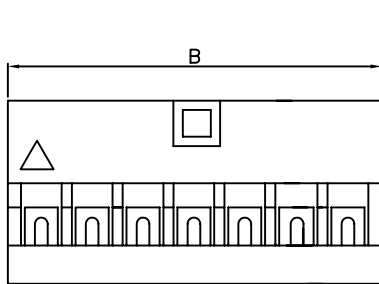
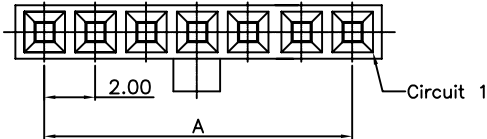
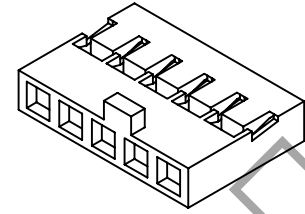
PART NO.	Dimensions	
	A	B
A2005H-02P	2.00	4.40
A2005H-03P	4.00	6.40
A2005H-04P	6.00	8.40
A2005H-05P	8.00	10.40
A2005H-06P	10.00	12.40
A2005H-07P	12.00	14.40
A2005H-08P	14.00	16.40
A2005H-09P	16.00	18.40
A2005H-10P	18.00	20.40
A2005H-11P	20.00	22.40
A2005H-12P	22.00	24.40
A2005H-13P	24.00	26.40
A2005H-14P	26.00	28.40
A2005H-15P	28.00	30.40
A2005H-16P	30.00	32.40
A2005H-17P	32.00	34.40
A2005H-30P	58.00	60.40

Unit: mm

## A2005HD — 2.00mm pitch Housing

### Reference Informations:

- \*Material: PA66,UL94V-2
- \*Suitable E.N A2005 series Terminal
- \*Mates with E.N A2005 series Wafer



### Ordering Information & Dimensions

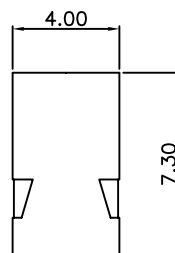
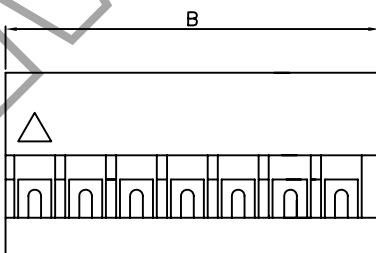
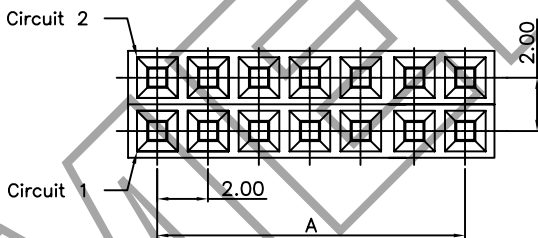
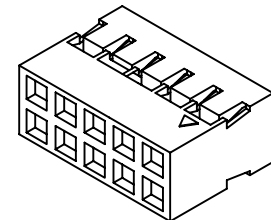
PART NO.	Dimensions	
	A	B
A2005HD-02P	2.00	4.40
A2005HD-03P	4.00	6.40
A2005HD-04P	6.00	8.40
A2005HD-05P	8.00	10.40
A2005HD-06P	10.00	12.40
A2005HD-07P	12.00	14.40
A2005HD-08P	14.00	16.40
A2005HD-09P	16.00	18.40
A2005HD-10P	18.00	20.40
A2005HD-11P	20.00	22.40
A2005HD-12P	22.00	24.40
A2005HD-13P	24.00	26.40
A2005HD-14P	26.00	28.40
A2005HD-15P	28.00	30.40
A2005HD-16P	30.00	32.40
A2005HD-17P	32.00	34.40
A2005HD-30P	58.00	60.40

Unit: mm

## A2005H-2X — 2.00mm pitch Dual Row Housing

### Reference Informations:

- \*Material: PA66,UL94V-2
- \*Suitable E.N A2005 series Terminal
- \*Mates with E.N A2005 series Dual Row Wafer



### Ordering Information & Dimensions

PART NO.	Dimensions	
	A	B
A2005H-02X02P	2.00	4.40
A2005H-02X03P	4.00	6.40
A2005H-02X04P	6.00	8.40
A2005H-02X05P	8.00	10.40
A2005H-02X06P	10.00	12.40
A2005H-02X07P	12.00	14.40
A2005H-02X08P	14.00	16.40
A2005H-02X09P	16.00	18.40
A2005H-02X10P	18.00	20.40
A2005H-02X11P	20.00	22.40
A2005H-02X12P	22.00	24.40
A2005H-02X13P	24.00	26.40
A2005H-02X14P	26.00	28.40
A2005H-02X15P	28.00	30.40
A2005H-02X16P	30.00	32.40
A2005H-02X17P	32.00	34.40
A2005H-02X30P	58.00	60.40

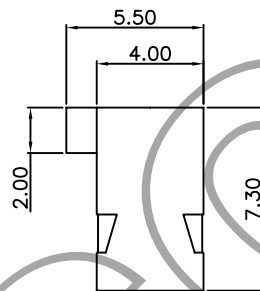
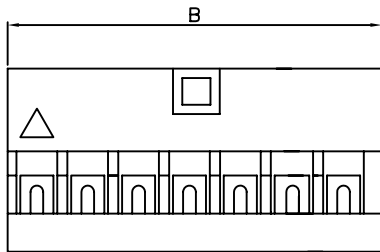
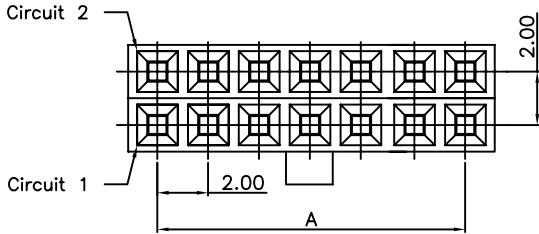
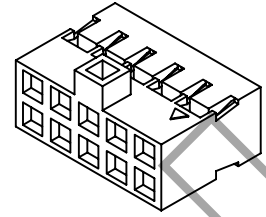
Unit: mm

## A2005HD-2X

2.00mm pitch Dual Row Housing

### Reference Informations:

- \*Material: PA66,UL94V-2
- \*Suitable E.N A2005 series Terminal
- \*Mates with E.N A2005 series Dual Row Wafer



### Ordering Information & Dimensions

PART NO.	Dimensions	
	A	B
A2005HD-2X02P	2.00	4.40
A2005HD-2X03P	4.00	6.40
A2005HD-2X04P	6.00	8.40
A2005HD-2X05P	8.00	10.40
A2005HD-2X06P	10.00	12.40
A2005HD-2X07P	12.00	14.40
A2005HD-2X08P	14.00	16.40
A2005HD-2X09P	16.00	18.40
A2005HD-2X10P	18.00	20.40
A2005HD-2X11P	20.00	22.40
A2005HD-2X12P	22.00	24.40
A2005HD-2X13P	24.00	26.40
A2005HD-2X14P	26.00	28.40
A2005HD-2X15P	28.00	30.40
A2005HD-2X30P	58.00	60.40

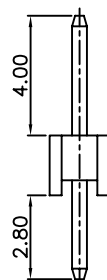
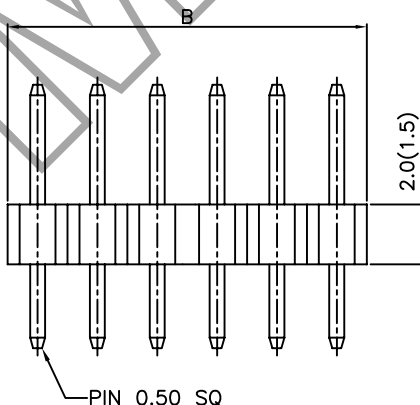
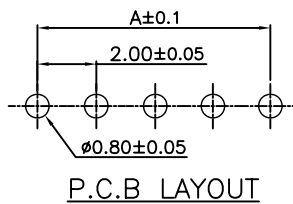
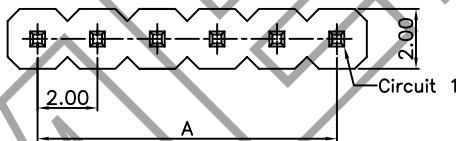
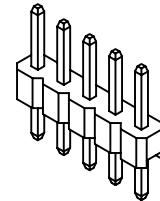
Unit: mm

## A2005WV

2.00mm pitch 180° Wafer

### Reference Informations:

- \*Material: PA6T,UL94V-0
- \*Suitable E.N A2005 series Terminal
- \*Mates with E.N A2005 series Housing Or Female Header



### Ordering Information & Dimensions

PART NO.	Dimensions	
	A	B
A2005WV-02P	2.00	4.00
A2005WV-03P	4.00	6.00
A2005WV-04P	6.00	8.00
A2005WV-05P	8.00	10.00
A2005WV-06P	10.00	12.00
A2005WV-07P	12.00	14.00
A2005WV-08P	14.00	16.00
A2005WV-09P	16.00	18.00
A2005WV-10P	18.00	20.00
A2005WV-11P	20.00	22.00
A2005WV-12P	22.00	24.00
A2005WV-13P	24.00	26.00
A2005WV-14P	26.00	28.00
A2005WV-15P	28.00	30.00
A2005WV-16P	30.00	32.00
A2005WV-17P	32.00	34.00
A2005WV-40P	78.00	80.00

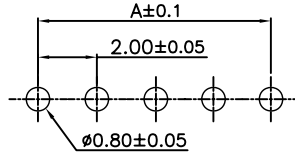
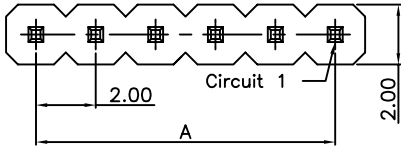
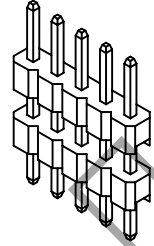
Unit: mm

## A2005WVA

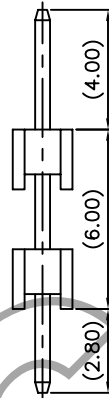
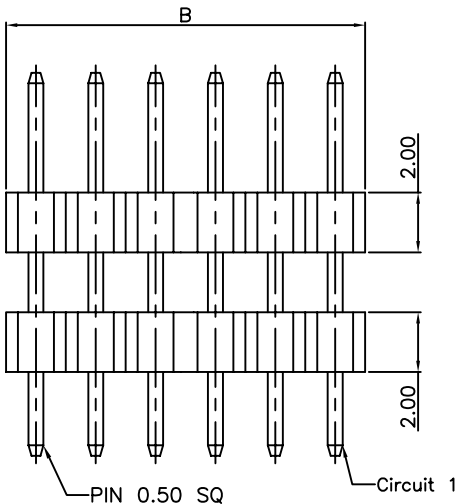
2.00mm pitch Dual Row Wafer

### Reference Informations:

- \*Material: PA6T,UL94V-0
- \*Suitable E.N A2005 series Terminal
- \*Mates with E.N A2005 series Housing Or Female Header



P.C.B LAYOUT



### Ordering Information & Dimensions

PART NO.	Dimensions	
	A	B
A2005WVA-02P	2.00	4.00
A2005WVA-03P	4.00	6.00
A2005WVA-04P	6.00	8.00
A2005WVA-05P	8.00	10.00
A2005WVA-06P	10.00	12.00
A2005WVA-07P	12.00	14.00
A2005WVA-08P	14.00	16.00
A2005WVA-09P	16.00	18.00
A2005WVA-10P	18.00	20.00
A2005WVA-11P	20.00	22.00
A2005WVA-12P	22.00	24.00
A2005WVA-13P	24.00	26.00
A2005WVA-14P	26.00	28.00
A2005WVA-15P	28.00	30.00
A2005WVA-16P	30.00	32.00
A2005WVA-17P	32.00	34.00
A2005WVA-40P	78.00	80.00

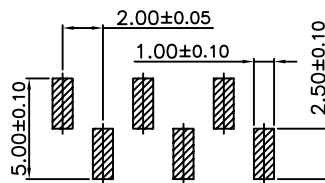
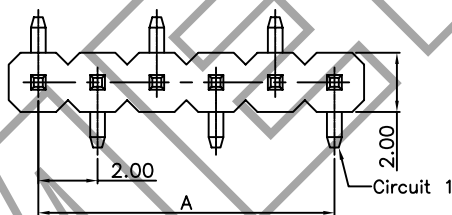
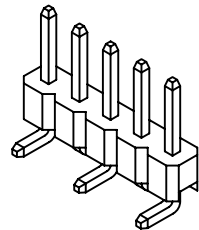
Unit: mm

## A2005WV-S

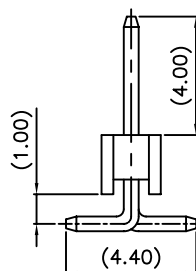
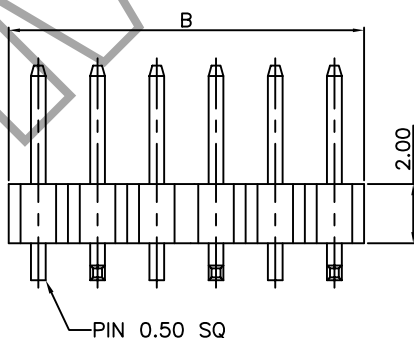
2.00mm pitch 180° Wafer - SMT TYPE

### Reference Informations:

- \*Material: PA6T,UL94V-0
- \*Suitable E.N A2005 series Terminal
- \*Mates with E.N A2005 series Housing Or Female Header



P.C.B LAYOUT



### Ordering Information & Dimensions

PART NO.	Dimensions	
	A	B
A2005WV-S-02P	2.00	4.00
A2005WV-S-03P	4.00	6.00
A2005WV-S-04P	6.00	8.00
A2005WV-S-05P	8.00	10.00
A2005WV-S-06P	10.00	12.00
A2005WV-S-07P	12.00	14.00
A2005WV-S-08P	14.00	16.00
A2005WV-S-09P	16.00	18.00
A2005WV-S-10P	18.00	20.00
A2005WV-S-11P	20.00	22.00
A2005WV-S-12P	22.00	24.00
A2005WV-S-13P	24.00	26.00
A2005WV-S-14P	26.00	28.00
A2005WV-S-15P	28.00	30.00
A2005WV-S-16P	30.00	32.00
A2005WV-S-17P	32.00	34.00
A2005WV-S-40P	78.00	80.00

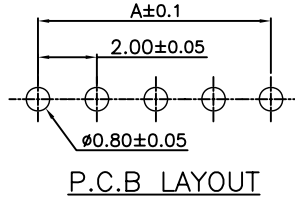
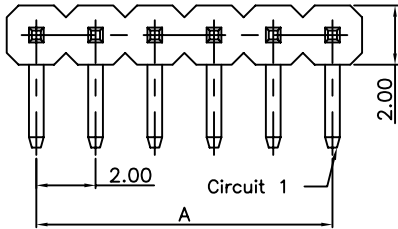
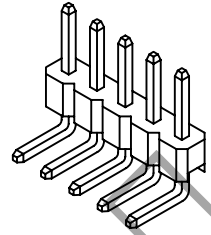
Unit: mm

## A2005WR

2.00mm pitch 90° Wafer

### Reference Informations:

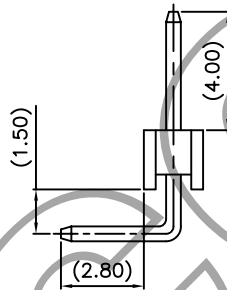
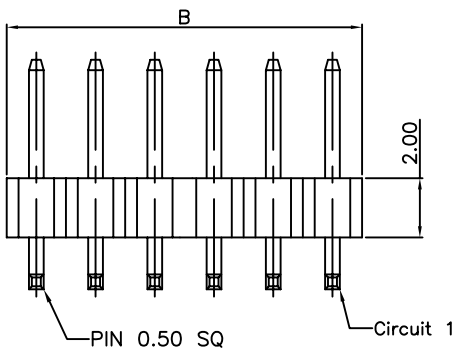
- \*Material: PA6T,UL94V-0
- \*Suitable E.N A2005 series Terminal
- \*Mates with E.N A2005 series Housing Or Female Header



Ordering Information & Dimensions

PART NO.	Dimensions	
	A	B
A2005WR-02P	2.00	4.00
A2005WR-03P	4.00	6.00
A2005WR-04P	6.00	8.00
A2005WR-05P	8.00	10.00
A2005WR-06P	10.00	12.00
A2005WR-07P	12.00	14.00
A2005WR-08P	14.00	16.00
A2005WR-09P	16.00	18.00
A2005WR-10P	18.00	20.00
A2005WR-11P	20.00	22.00
A2005WR-12P	22.00	24.00
A2005WR-13P	24.00	26.00
A2005WR-14P	26.00	28.00
A2005WR-15P	28.00	30.00
A2005WR-16P	30.00	32.00
A2005WR-17P	32.00	34.00
A2005WR-40P	78.00	80.00

Unit: mm

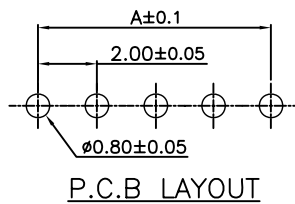
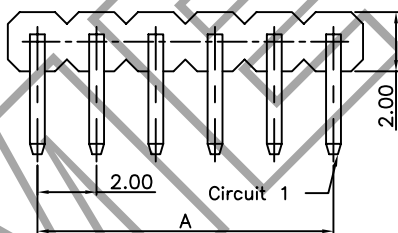
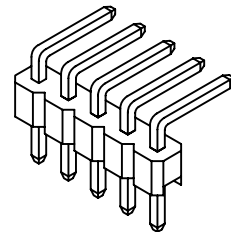


## A2005WRA

2.00mm pitch 180° Wafer

### Reference Informations:

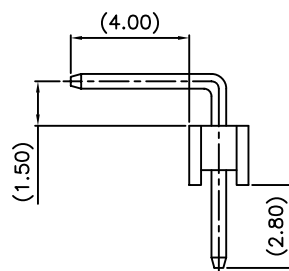
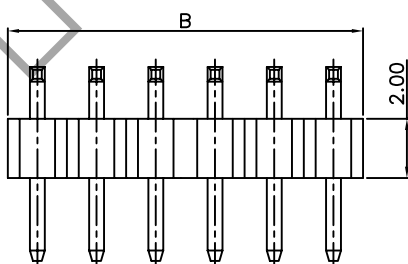
- \*Material: PA6T,UL94V-0
- \*Suitable E.N A2005 series Terminal
- \*Mates with E.N A2005 series Housing Or Female Header



Ordering Information & Dimensions

PART NO.	Dimensions	
	A	B
A2005WRA-02P	2.00	4.00
A2005WRA-03P	4.00	6.00
A2005WRA-04P	6.00	8.00
A2005WRA-05P	8.00	10.00
A2005WRA-06P	10.00	12.00
A2005WRA-07P	12.00	14.00
A2005WRA-08P	14.00	16.00
A2005WRA-09P	16.00	18.00
A2005WRA-10P	18.00	20.00
A2005WRA-11P	20.00	22.00
A2005WRA-12P	22.00	24.00
A2005WRA-13P	24.00	26.00
A2005WRA-14P	26.00	28.00
A2005WRA-15P	28.00	30.00
A2005WRA-16P	30.00	32.00
A2005WRA-17P	32.00	34.00
A2005WRA-40P	78.00	80.00

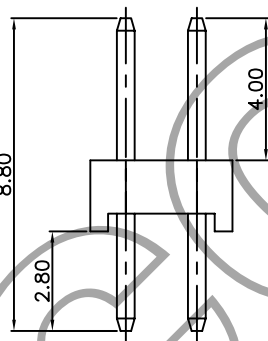
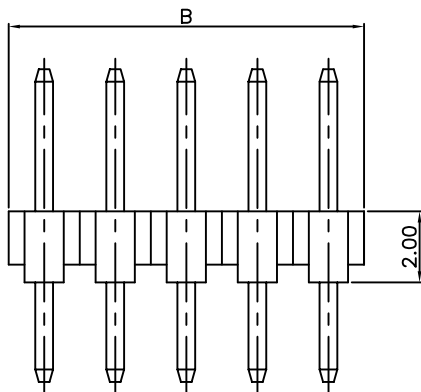
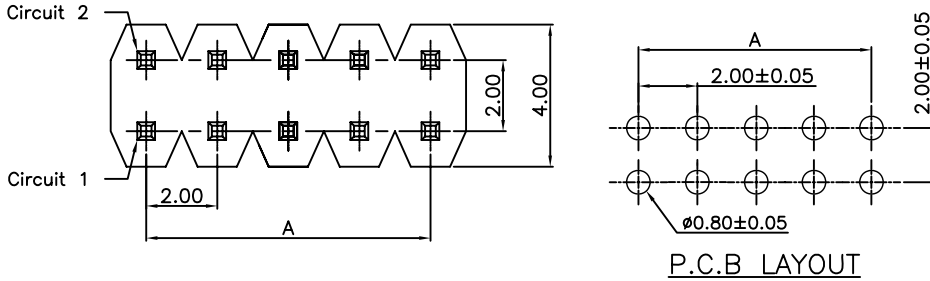
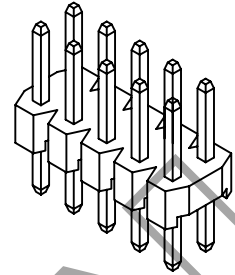
Unit: mm



## A2005WV-2X — 2.00mm pitch 90° Dual Row Wafer

### Reference Informations:

- \*Material: Pin: Brass/Tin-plated  
Wafer: PA6T,UL94V-0
- \*Mates with E.N A2005 series Dual Row Housing  
Or Dual Row Female Header



### Ordering Information & Dimensions

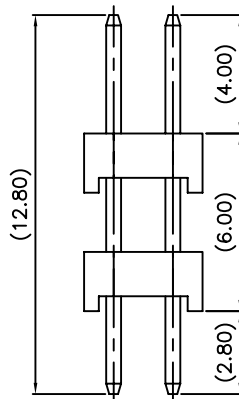
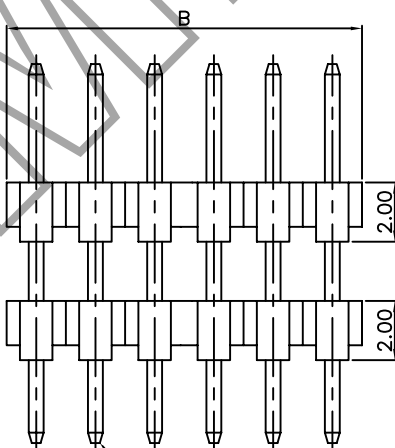
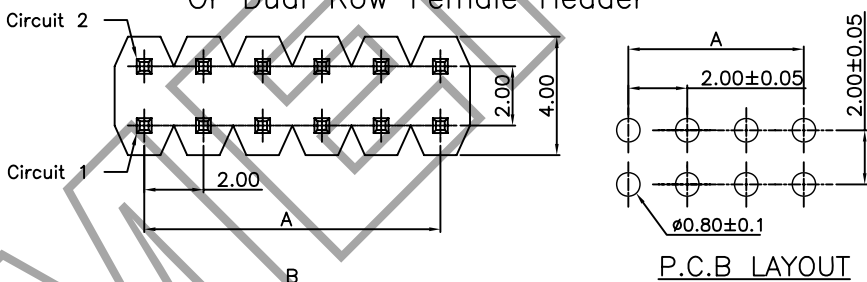
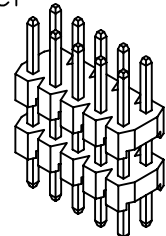
PART NO.	Dimensions	
	A	B
A2005WV-2X02P	2.00	4.00
A2005WV-2X03P	4.00	6.00
A2005WV-2X04P	6.00	8.00
A2005WV-2X05P	8.00	10.00
A2005WV-2X06P	10.00	12.00
A2005WV-2X07P	12.00	14.00
A2005WV-2X08P	14.00	16.00
A2005WV-2X09P	16.00	18.00
A2005WV-2X10P	18.00	20.00
A2005WV-2X11P	20.00	22.00
A2005WV-2X12P	22.00	24.00
A2005WV-2X13P	24.00	26.00
A2005WV-2X14P	26.00	28.00
A2005WV-2X15P	28.00	30.00
A2005WV-2X16P	30.00	32.00
A2005WV-2X17P	32.00	34.00
A2005WV-2X40P	78.00	80.00

Unit: mm

## A2005WVA-2X — 2.00mm pitch 90° Dual Row Wafer

### Reference Informations:

- \*Material: Pin: Brass/Tin-plated  
Wafer: PA6T,UL94V-0
- \*Mates with E.N A2005 series Dual Row Housing  
Or Dual Row Female Header



### Ordering Information & Dimensions

PART NO.	Dimensions	
	A	B
A2005WVA-2X02P	2.00	4.00
A2005WVA-2X03P	4.00	6.00
A2005WVA-2X04P	6.00	8.00
A2005WVA-2X05P	8.00	10.00
A2005WVA-2X06P	10.00	12.00
A2005WVA-2X07P	12.00	14.00
A2005WVA-2X08P	14.00	16.00
A2005WVA-2X09P	16.00	18.00
A2005WVA-2X10P	18.00	20.00
A2005WVA-2X11P	20.00	22.00
A2005WVA-2X12P	22.00	24.00
A2005WVA-2X13P	24.00	26.00
A2005WVA-2X14P	26.00	28.00
A2005WVA-2X15P	28.00	30.00
A2005WVA-2X16P	30.00	32.00
A2005WVA-2X17P	32.00	34.00
A2005WVA-2X40P	78.00	80.00

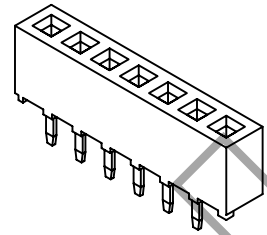
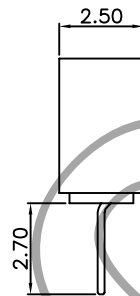
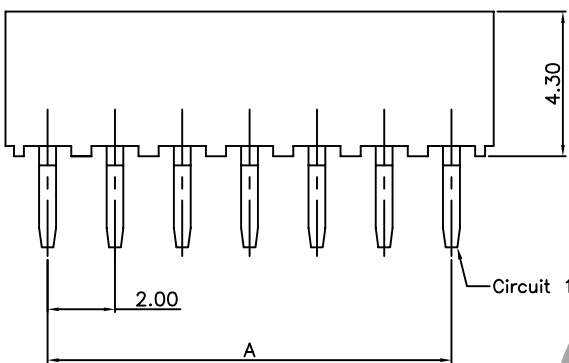
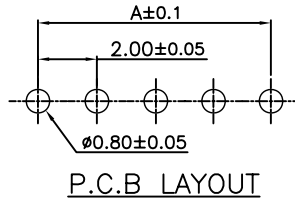
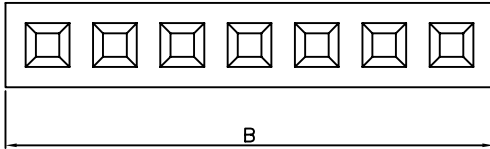
Unit: mm

## A2005HV

2.00mm pitch 180° Female Header

### Reference Informations:

- \*Material: Pin: Brass/Tin-plated  
Wafer: PBT,UL94V-0
- \*Mates with E.N A2005 series Wafer



### Ordering Information & Dimensions

PART NO.	Dimensions	
	A	B
A2005HV-02P	2.00	4.60
A2005HV-03P	4.00	6.60
A2005HV-04P	6.00	8.60
A2005HV-05P	8.00	10.60
A2005HV-06P	10.00	12.60
A2005HV-07P	12.00	14.60
A2005HV-08P	14.00	16.60
A2005HV-09P	16.00	18.60
A2005HV-10P	18.00	20.60
A2005HV-11P	20.00	22.60
A2005HV-12P	22.00	24.60
A2005HV-13P	24.00	26.60
A2005HV-14P	26.00	28.60
A2005HV-15P	28.00	30.60
A2005HV-16P	30.00	32.60
A2005HV-17P	32.00	34.60
A2005HV-40P	78.00	80.60

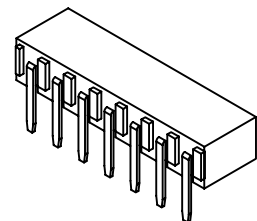
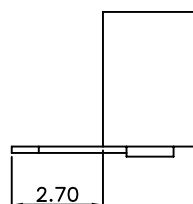
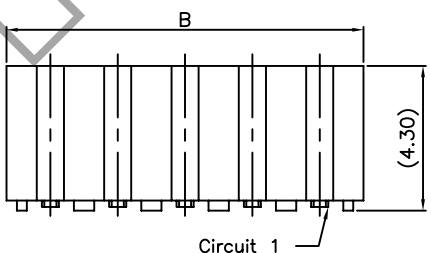
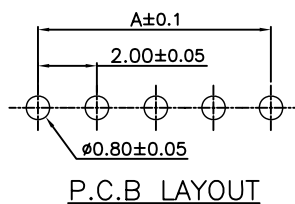
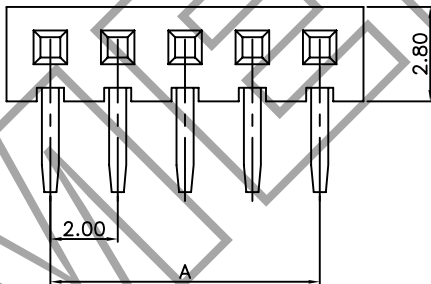
Unit: mm

## A2005HR

2.00mm pitch 90° Female Header

### Reference Informations:

- \*Material: Pin: Brass/Tin-plated  
Wafer: PBT,UL94V-0
- \*Mates with E.N A2005 series Wafer



### Ordering Information & Dimensions

PART NO.	Dimensions	
	A	B
A2005HR-02P	2.00	4.60
A2005HR-03P	4.00	6.60
A2005HR-04P	6.00	8.60
A2005HR-05P	8.00	10.60
A2005HR-06P	10.00	12.60
A2005HR-07P	12.00	14.60
A2005HR-08P	14.00	16.60
A2005HR-09P	16.00	18.60
A2005HR-10P	18.00	20.60
A2005HR-11P	20.00	22.60
A2005HR-12P	22.00	24.60
A2005HR-13P	24.00	26.60
A2005HR-14P	26.00	28.60
A2005HR-15P	28.00	30.60
A2005HR-16P	30.00	32.60
A2005HR-17P	32.00	34.60
A2005HR-40P	78.00	80.60

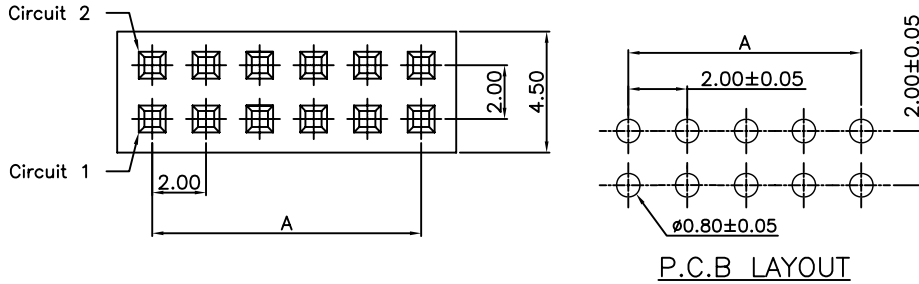
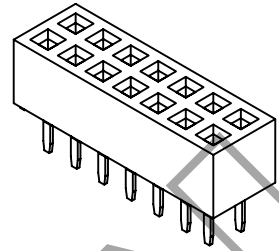
Unit: mm



## A2005HV-2X — 2.00mm pitch 90° Dual Row Female Header

### Reference Informations:

- \*Material: Pin: Brass/Tin-plated  
Wafer: PBT,UL94V-0
- \*Mates with E.N A2005 series Dual Row Wafer



### Ordering Information & Dimensions

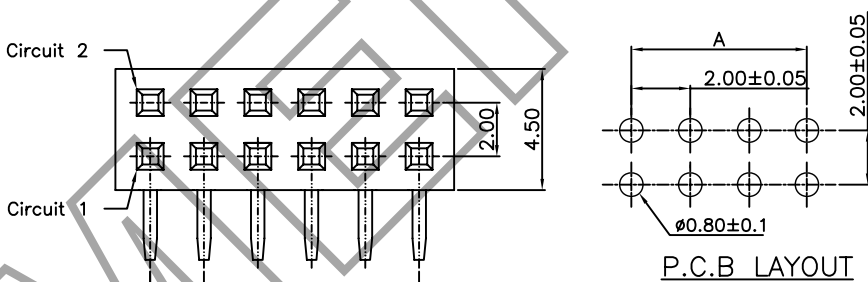
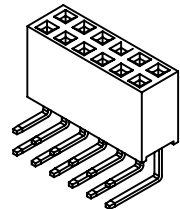
PART NO.	Dimensions	
	A	B
A2005HV-2X02P	2.00	4.60
A2005HV-2X03P	4.00	6.60
A2005HV-2X04P	6.00	8.60
A2005HV-2X05P	8.00	10.60
A2005HV-2X06P	10.00	12.60
A2005HV-2X07P	12.00	14.60
A2005HV-2X08P	14.00	16.60
A2005HV-2X09P	16.00	18.60
A2005HV-2X10P	18.00	20.60
A2005HV-2X11P	20.00	22.60
A2005HV-2X12P	22.00	24.60
A2005HV-2X13P	24.00	26.60
A2005HV-2X14P	26.00	28.60
A2005HV-2X15P	28.00	30.60
A2005HV-2X16P	30.00	32.60
A2005HV-2X17P	32.00	34.60
A2005HV-2X40P	78.00	80.60

Unit: mm

## A2005HR-2X — 2.00mm pitch 90° Dual Row Female Header

### Reference Informations:

- \*Material: Pin: Brass/Tin-plated  
Wafer: PBT,UL94V-0
- \*Mates with E.N A2005 series Dual Row Wafer



### Ordering Information & Dimensions

PART NO.	Dimensions	
	A	B
A2005HR-2X02P	2.00	4.60
A2005HR-2X03P	4.00	6.60
A2005HR-2X04P	6.00	8.60
A2005HR-2X05P	8.00	10.60
A2005HR-2X06P	10.00	12.60
A2005HR-2X07P	12.00	14.60
A2005HR-2X08P	14.00	16.60
A2005HR-2X09P	16.00	18.60
A2005HR-2X10P	18.00	20.60
A2005HR-2X11P	20.00	22.60
A2005HR-2X12P	22.00	24.60
A2005HR-2X13P	24.00	26.60
A2005HR-2X14P	26.00	28.60
A2005HR-2X15P	28.00	30.60
A2005HR-2X16P	30.00	32.60
A2005HR-2X17P	32.00	34.60
A2005HR-2X40P	78.00	80.60

Unit: mm